



# SWASO GLOBAL CONSULTANTS LTD

Legacy Plaza, 1<sup>st</sup> floor, Salama Rd  
P.O Box 580-40300, Homa Bay  
Cell: 0725 352 289/0746 069 275  
Email:swasoconsultant@gmail.com

## **COMPANY PROFILE**

### **TABLE OF CONTENTS**

#### **Page**

- 1. Acknowledgement**
- 2. Introduction**
- 3. Vision**
- 4. Mission**
- 5. Core Values**
- 6. Motto**
- 7. Our Commitments**
- 8. Product and Services**
- 9. In-House training Programs**
- 10. Management Team**
- 11. Our Clients**
- 12. Conclusion**

## **1. Acknowledgement**

We acknowledge the contributions from all the stakeholders in the development of this summary that provides a roadmap for implementation of SGCL mission. These teams are available to respond to calls for proposals, offer training and implement consultancy assignments. We welcome you to benefit from the services of highly qualified team of SGCL to respond to your needs

## **2. Introduction**

Swaso Global Consultants Limited (SGCL) is a legally registered consultancy firm under business registration number BN-2RCZ2B2 located in a serene environment at Legacy Plaza, Salama road in Homa- Bay town, Homa Bay County. It was incorporated in 2018 and is owned by a group of highly qualified entrepreneurs. The firm offers financial access facilitation, tailored trainings, Consultancy and advisory services to organizations and individuals to meet their needs.

SGCL has significant consulting experience in the areas of Financial, Accounting, and Tax Services, Organizational Development, Training, Capacity Building Facilitation, Evaluations and HR Advisory Services to both local and international Agencies, Non-Governmental Organizations and Community Based Organizations.

SGCL works with both full time and associate Consultants who include experts in Human Resource Advisory Services, Training and Capacity Building, Project Evaluations, Leadership and Governance, Negotiations, Conflict Transformations, Teambuilding, Community Organizing, Civic education and Social Change program management.

SGCL is committed to provide quality services that are effective resulting in desired goals that are pragmatic and approachable. We focus on unique client needs and different nature of businesses, thus overall efficiency in terms of resources utilized during the sessions. At SGCL, your needs meet the right expertise.

## **3. Vision**

To be a leading Center of Innovations and Excellence in Consultancy, Capacity Building, Management, Governance and Extension Services in Kenya and beyond.

## **4. Mission**

Our Mission is to build the capacity of individuals, organizations, institutions and networks for good governance and effective management through provision of Consultancy Services, Training, Capacity Building and HR advisory Services.

## **5 Core Values**

SGCL is committed to the following Core values:

- Quality Services
- Professionalism
- Integrity

- Teamwork
- Commitment to Serve
- Effectiveness
- Efficiency in Service delivery

## **6. Motto**

No one makes it alone, Teamwork Conquers.

## **7. Our commitments**

At Swaso Global Consultants Limited we mean business, do not compromise on delivering our promises to our clients and we remain customer focused. We do not just give you what you think you need, but we help you realize what is actually required in your business world, redefine your future business needs and then work together in delivering them.

Our commitment is to deliver nothing less than the best to our clients-going beyond customer's expectations. We know it's not easy, but we have to do it, because that has remained the reason for our success over the past years. We can't risk losing it, and we continue to build the capacity of our human capital to ensure they consistently deliver the best to our clients. At SGCL, you are assured of best services and we remain ahead of the rest.

## **8. SGCL Products and Services**

The Services offered by SGCL are divided into three broad categories namely;

- Finance Access Facilitation/Internal Audit Consultancy,
- Human Resource Advisory Services,
- Training and Capacity Building.

This is where our client's needs meet appropriate expertise. Details of the three broad categories are as follows:

### **8.1 Consultancy Services**

SGCL provides service Consultancies and expert professional advice in Finance/Tax, Audit and Business Reengineering field(s) based on client requirements and specifications. Consultancy services include preparations of financial Proposals, development of Operational Frameworks, Conducting Project Evaluations, Drafting of Policy documents and Guidelines, Developing Concepts, Implementation Frameworks, Monitoring and Evaluation frameworks, Computation/Assessment of Tax Liability, in addition to below itemized areas.

#### **8.1 (a) Bookkeeping**

Bookkeeping is the most basic of all accounting functions. Bookkeeping involves maintaining accurate and updated records of all of your company's financial activity. This includes bank records, tax filings, payroll records, purchase and sale records, and regulatory filings. These

records are essential to regulatory compliance. Proper bookkeeping makes other accounting functions, such as audits, payroll, and tax preparation, much simpler and less time consuming.

### **8.1 (b) Payroll**

Payroll is a critical business operations function performed by your accounting team. Payroll involves managing all employee compensation, benefits, and withholdings. We manage your payroll on an ongoing basis, ensuring that all employees are compensated according to their employment agreements and benefit selections. All payrolls related taxes are also managed and filled on a timely manner.

### **8.1 (c) Financial Analysis and Finance Access Facilitation**

It is wise to conduct periodic review and analysis of your company's financial performance. These reviews are typically called audits, and are an important part of regulatory compliance and shareholder disclosure. Additionally, financial analysis can provide valuable insight into your company's financial health which can help you make sound decisions for the future. Customers' financial access linkages is part of our responsibilities. According to customers funding needs, we scan the market, pitch on behalf of the client and link the customer with financier who is willing to partner with them.

### **8.1 (d) Tax Preparation.**

Commercial tax preparation can be extremely complex. Records and submissions must be prepared carefully in order to minimize your risk of unforeseen tax liabilities, fees, or audits. Our team will work with you to prepare complete and accurate corporate tax filings on a monthly and annual basis.

### **8.1 (e) Regulatory Compliance.**

Compliance with Government financial regulations is extremely important to every business. Our team will work with you on a regular basis to ensure that your business activities, records, and processes are fully in compliance with all applicable regulations.

### **8.1 (f) Financial Consulting.**

Our financial consulting services are designed to provide you with expert analysis and advice regarding your company's strategic decisions. As you consider exploring business opportunities, investments, and partnerships, it is important to understand the short, medium, and long-term ramifications of your decisions.

Our financial consulting services make it easy to understand the financial impact your decisions will have on your company's future.

## **8.2 Training and Capacity Development.**

Training in Leadership, Governance and Management is SGCL's flagship. Over the year, SGCL has provided short course training and capacity building to Non-Governmental Organizations and For-Profit Organizations locally on Governance, leadership and Management Systems.

SGCL provides tailor-made in-service courses, lasting a few days to several weeks. The trainings are aimed at improving knowledge, skills and competence that result in better performance and high productivity of professionals. The courses offered are accredited and certified with relevant organizations and delivered by qualified professionals. The trainings take the form of seminars, workshops and symposia either in-site or at the client institution/organization.

### **8.3 Human Resource Advisory Services.**

SGCL is a specialist in Human Resource Management Services. The firm undertakes the following HR services: Recruitment, Psychometric testing, Job Evaluations, Talent Management Solutions, competence Assessment, Workforce Analytics, Workforce Optimization and Strategy, Human Resource Audits and Reviews. These consulting services and smart tools allow for flexibility and adaptability for both volatility and growth in economy and organizational structure. Supporting a well-founded strategic approach to ensure that economy, efficiency, and effectiveness of the organization's human resource activity is clearly evidenced, reported and enhanced. Our HR advisory services are available nationally directly from our team.

### **9.0 SGCL In-house Training Programs.**

Swaso Global Consultants Limited provides internal training programs based on its core competencies. In the past year, SGCL has provided internal training programs at various, NGOs, SMEs among others.

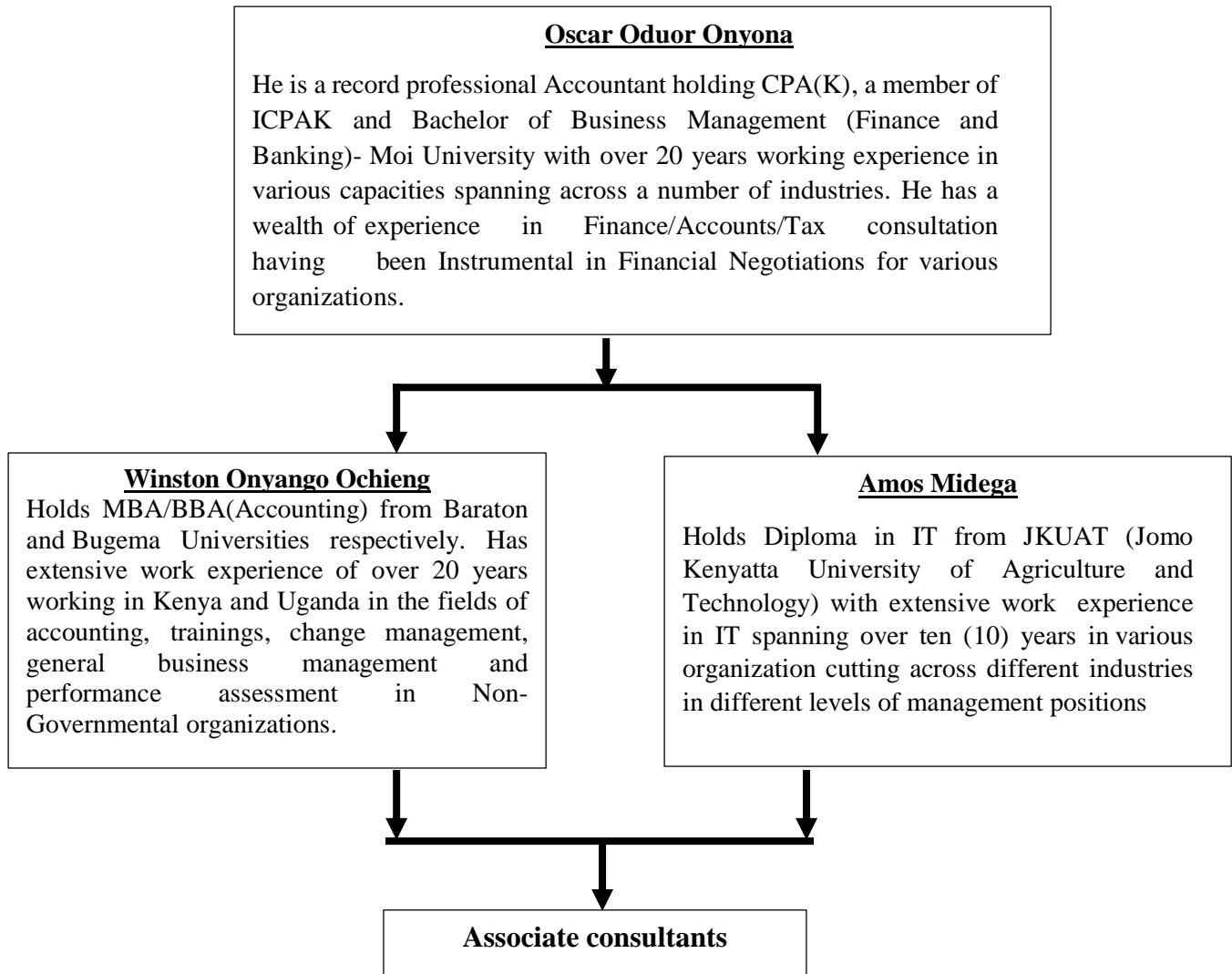
#### ***Key training programs include;***

1. Credit Control, Cash Flow and Debt management;
2. Finance Committees Training;
3. International Financial Reporting Standards;
4. Tax Frauds & Money Laundering;
5. Talent Management & Succession planning;
6. Management of Donor Funded Projects/ Resource Mobilization
7. Effective Supervisory and Team Building;
8. Training of Trainers;
9. Records and Information Management;
10. Risk Management;
11. Organizational Capacity Assessment

All our trainers are experienced practitioners, professionally certified, dedicated and specialized in their respective fields. Our philosophy is of Total Customers' Satisfaction. We carry out our task with integrity and full commitment. We continue to keep abreast with industry developments through individual and ongoing continuing education, in-depth training and consulting that your organization demands and deserves.

In 2½ years we have trained more than 800 people to improving their work productivity, leadership & communication skills, language proficiency, sales, negotiation & presentation skills, workplace management and personal development.

## 10. SWASO MANAGEMENT TEAM



## 11. Our Clients

We pride ourselves to good customer base and below are some of our customers that have enjoyed our first-class service delivery since inception of SGCL;

- a) USAID-Kenya Investment Mechanism (KIM) project. This is a USAID funded project that was implemented by The Palladium group to facilitate financial access of funds by MSMEs. This was done through subcontracted Business Advisory Service Providers (BASP) which Swaso Global Consultants Limited won to cover the lake region counties.
- b) Limafrika and Agrisolutions Ltd. This is a poultry Farm Company having contract farming arrangement with its farmers. SGCL fundraised equipment valued at Kes 1,500,000 and facilitated acquisition of pick up worth Kes 3,500,000.00. We also work with the company on capacity training to their farmers on financial literacy and good record keeping.
- c) Obanda Poultry Farm based in Yala, Siaya County. This is also a poultry farmer with 5,000 layers and collecting 154 trays of eggs daily. Swaso Global Consultants Limited is their key management advisor and we are helped in fundraising of more than Kes 5M to enable him set up a similar poultry house for another batch of 5,000 birds.
- d) Jitegemea Credit scheme. This is a Sacco with membership in five counties. SGCL helped fundraised Kes 100M (One hundred million) for on lending to the members. We are also in partnership with the Sacco for capacity building to their members on financial management matters.
- e) Transoceanic Project Development (K) Ltd, with head Office in Mombasa-A Logistic, Transport, C&F Company with both regional and International coverage ([www.tpdglobal.com](http://www.tpdglobal.com)) . Some of the Key Services being Offered are ;
  - Monthly book keeping and Financial Accounts Maintenance and Generation
  - Monthly Tax Computation and Filing and general tax consultation.
  - Debt Collection and Accounts Receivable Maintenance.
  - Lead consultant in Annual Audit report preparation for Audit matters.
- f) Kenap Investment Company Limited-A Civil Construction Company based in Ukunda, Kwale County-We audited their financial statement and reports for the year 2019 and we intend to remain in office for a foreseeable future.
- g) World Vision ADPs, covering their flagship ‘Empowered World View’ approach along with ‘Celebrating Families’ Trainings. We similarly build capacities of communities on Advocacy and Social Accountability through their ‘Citizen Voice and Action’ approach
- h) Homa Bay Agroproducts Company Limited-An Agricultural/Horticultural Company based in Kabuoch, Homa Bay County- We are their Auditor since 2018.

- i) Plan Norad, and Plan Nilinde conducted a 4 modular training package with Leadership for Hope' trainings and disability mainstreaming initiatives
- j) Osani Community Health and Development Project- A Community Based Health Service Provider Based in Ndhiwa, Homa Bay County. We did internal audit on their financial operation for 2018 and the report generated helped In Changing the operational mode of the facility. The Cashier was also offered in-house training on effective ways of handling cash and cash equivalent so that the facility can meet its key objective of Modern Health Service Provision to the Community.

## 12 Conclusions

In a nutshell, SGCL is current to the needs of the 21<sup>st</sup> century business environment and has positioned itself to offer solutions by increasing capacity through in-house training, Finance/Accounts and Tax consultancy and HR advisory services. This is projected to yield increased productivity and quality life. We welcome you to SGCL for increased Literacy in Financial matters, networking

SWASO CONSULTANCY SERVICES™  
ACCOUNTS & TAX CONSULTANT  
1<sup>ST</sup> FLOOR LEGAC. PLAZA  
P. O. Box.....40300, HOMA-BAY  
Cell: 0725 352 289 / 0751 510 929  
Email:swasoconsultant@gmail.com  
Sign:.....